

Chipkin Automation Systems CAS BACnet Explorer

A member of BACnet International



Explore and Discover

Automatically discover all the devices, objects, and their properties on your network. The objects and devices are arranged in an easy to use tree format with branches for each network, object, and device.

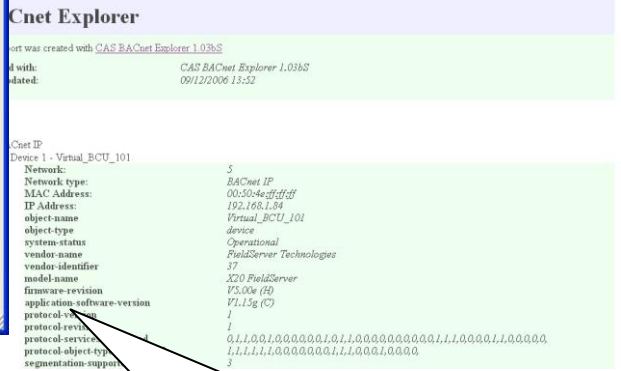
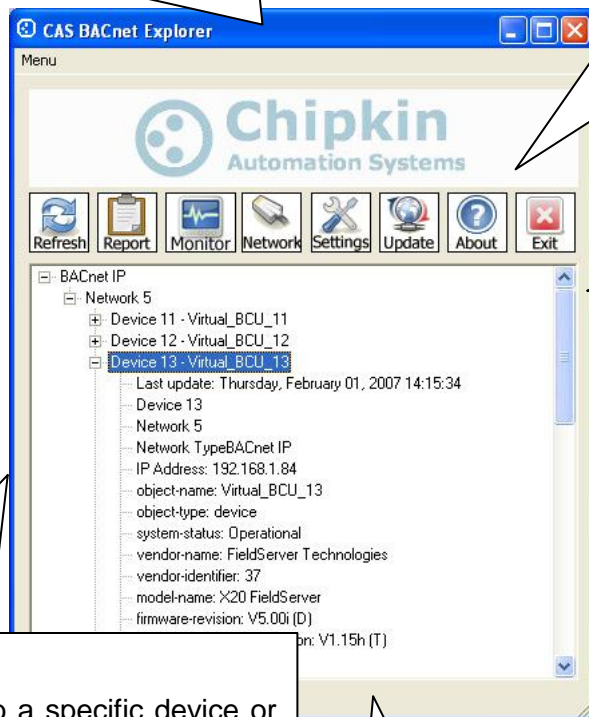
Easy, fast and useful – There is no better way to test the BACnet interface on a device or system. Install, test and then leave site with confidence and proof that the interface is functional.

Test

The CAS BACnet Explorer allows you to write to the BACnet® points, turn lights on or off, generate alarms, ACK alarms, etc

Monitor

Add objects to a monitoring table which can be saved and opened for simple direct monitoring of specific objects and properties from multiple devices. Open multiple monitoring tables simultaneously.



Police

Monitor traffic to a specific device or object to see who's changing the set point unexpectedly. Records MAC addresses, IP address, messages and other information useful in tracking down unauthorized / unexpected commands.

Free Trial

<http://www.chipkin.com/a/resources/BACnet>

Report / Document

Fantastic reports and multiple report formats – see the level of detail you require. Print them to XML or HTML reports. View them in internet Explorer.

CAS BACnet Explorer - Features

- Supports BACnet®/MSTP, BACnet®/IP and BACnet®/Ethernet 802.3 simultaneously.
- Runs on Windows 2000, XP and Vista.
- Auto / Manual Refresh. Reports the age of last update.
- Multiple Report formats
- Build monitor tables to watch specific points and properties. Save and load the tables.
- No guessing – Lots of informational messages help you understand abnormal conditions.
- Optimize - Configure which properties get read.
- Refresh all, a device or a data object.
- Discover hundreds of devices with thousands of data objects.

CAS BACnet Explorer - Benefits

Ease of Use

Very simple interface requires almost no user interaction. No Training required.
No switching between protocols like some competitors.

Easily prove the device you installed is working



If you install a couple of devices that will form part of a larger system then you know how often the system problems get blamed on your device. 'We can connect to your device'. Use the explorer to prove your device is working when you complete the installation. Print a report and you have your proof.

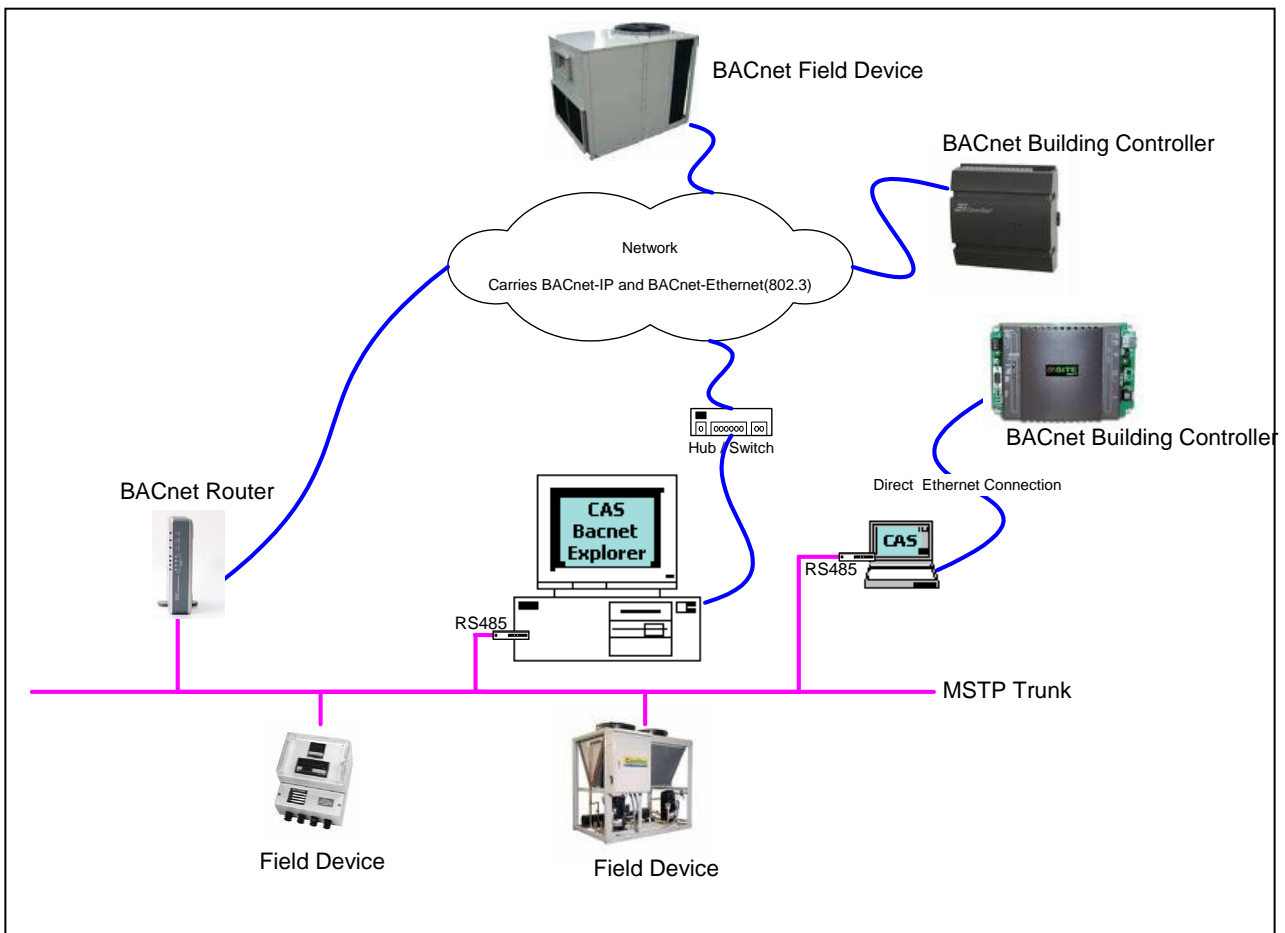
Don't waste your company's time and money solving system integrator problems. Use the explorer to draw a line in the sand. The explorer is 3rd party software. There is no question of bias.

Equip your Field Service Technicians.

The CAS explorer represents excellent value for money. Its affordable price and company / site licensing discounts allow you to put this effective tool in the hands that need it most.

CAS BACnet Explorer - Connectivity

-  BACnet MSTP - Connect from your PC using a USB-RS485 converter, RS232/485 converter or BACnet Router
-  BACnet IP and Ethernet - Connect from your PC using standard networking devices and cables.



CAS BACnet Explorer - Licenses FAQ

One License = 2 keys

1x USB Key

Simply move this key from computer to computer to use our software on a new computer. Customers who purchase our software are provided a USB key. In some cases we provide USB keys for evaluation purposes – ask.

By the way, for those purchasing license packs, our current policy is to ship 1 extra USB key for each 5 licenses purchased. We intend the 6th USB key as a spare.

1x Soft Key

Exists for two reasons 1) Allows you to use the software before the USB key arrives. 2) Provides a backup to you should lose your USB key.

This key is tied to an email address because it is emailed to that email address.

When you do not have the USB key inserted, the software looks for the soft key. If it can't find one then it asks you to activate the key. You complete a screen with the licensed email address (we are happy to change the email on record if you notify us). We email the key to that email address. You copy and paste the key and the software is activated.

If you want to use the software on a different computer and you don't have the USB key then you have to re-activate the software on the 2nd computer.

Do Licenses Expire ?

No. Full / purchased licenses never expire. Demo and evaluation licenses do expire. Once purchased, you can continue to use the software as long as you like.

What is the Service Agreement ?

We add new features and improve our software all the time. You can download newer versions of the software and use the newer versions. When you purchase the software you can download newer versions for a limited time period of 1 year after the date of purchase. After that time has passed you cannot activate newer versions but you can continue to use the version you are using for an indefinite period. Some customers choose to extend this period of time by purchasing a Service Agreement. If you purchase a 1 year agreement you are extending the default period by a year. Thus you can download and activate any newer version that we release during the 24 months that start ticking on your purchase date.

Free Licenses

If you purchase a FieldServer (communications protocol gateway eg. Lonworks/Modbus to BACnet) and if the gateway is for a BACnet project we include a **FREE** full license as part of the deal.

What happens if I damage/lose my USB Key ?

Contact us. We look after our customers.

CAS BACnet Explorer - Requirements

BACnet Protocols supported:	Supported	Comments
BACnet®/Ethernet 802.3	Yes	Using your any of one or more network adapters installed on your computer including your wireless adapter.
BACnet®/IP	Yes	Using your any of one or more network adapters installed on your computer including your wireless adapter.
BACnet®/MSTP	Yes	Connect from your laptop using any USB-485 or 232-485 converter

Requirements:	Comments
Windows: XP / 2000 / Vista / Windows 7	Installation and updates and license key requests require and internet connection to activate.
10 MB of free hard drive space	
A WinpCap supported network card.	99% of all network cards supported WinpCap